

PRODUCTS

Compact Diesel Type(5.5 - 10.2kVA)

Diesel Generators

SHX8000Di (7.0kVA)

SHX12000Di (10.2kVA)



SHX8000Di		SHX12000Di	
Rated Output 7.0 kVA (50/60Hz)	Fuel Consumption 1.6 l/h (50% Load)	Rated Output 10.2 kVA (50/60Hz)	Fuel Consumption 2.3 l/h (50% Load)

FEATURES

- High Performance Diesel Engine

Yanmar 2TNV70-ASG Compliant with EPA TIER 4 FINAL
Variable 2300 - 3400 rpm contributes to reduced fuel consumption and minimizing noise levels

- SPECIAL INVERTER for Pure Sine Wave Output ^{*1}

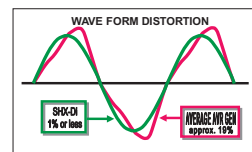
High quality, pure sine wave electrical output is ideal for sensitive equipment like PC and TVs.

- SAWAFUJI PMA (Permanent Magnet Alternator) ^{*2}

The PMA incorporates SAWAFUJI's state of the art winding technology and is 60% smaller than conventional alternators.

- SMART Multi LED Display ^{*3}

Shows rpm, cumulative running hours, and error messages for self-diagnostics.



*1: Inverter



*2: PMA



*3: Control Panel

SH07D (5.5 - 6.5kVA)



FEATURES

- Best-in-the-industry Engine

Kubota Z482 (SH07D) / D722 (SH11D)
The life of the genset is second to none with sufficient power exceeding your expectations.

- Emergency Auto Shutdown

Stops the engine automatically when it lacks enough oil or if water temperature overheats or output terminal cover is opened.

- Connectable with ATS (Automatic Transfer Switch)

When connected with ATS, the generator auto-starts when the utility power fails.

SH07D			SH11D		
Rated Output 5.5 kVA (50Hz)	Rated Output 6.5 kVA (60Hz)	Fuel Consumption 2.4 l/h (50Hz 100% Load)	Rated Output 8.0 kVA (50Hz)	Rated Output 10 kVA (60Hz)	Fuel Consumption 3.2 l/h (50Hz 100% Load)



Type R



Type LD

LINE UP SH07D/SH11D

Heavy Duty Gasoline Type (8.5 - 11.8kVA)

Gasoline Generators

SH11000 (8.5 - 9.5kVA)



FEATURES

- Powerful Gasoline Engine

Honda GX630 15.1kW Air-Cooled OHV V-TWIN Engine

- Control Panel

Easy to see and easy operation.
Standard features:V-meter, Hour-meter, Pilot Lamp

LINE UP SH11000/SHT11500

SH11000		SH11500	
Rated Output 8.5 kVA (50Hz)	Rated Output 9.5 kVA (60Hz)	Rated Output 10 kVA (50Hz)	Rated Output 11.5 kVA (60Hz)
Continuous Operating Hours 6.5 h (50Hz 100% Load)		Continuous Operating Hours 6.5 h (50Hz 100% Load)	Three Phase 3



Single Phase



Three Phase

Heavy Duty Diesel Type (12 - 22kVA)

SPEC. 5P

SH15D (12 - 13kVA)



LINE UP SH15D/SHT15D/SHT17D

SH15D		SHT15D/SHT17D	
Rated Output 12 kVA (50Hz)	Rated Output 13 kVA (60Hz)	Rated Output 15 kVA (50Hz)	Rated Output 16.3 kVA (60Hz)
Fuel Consumption 4.9 l/h (100% Load)		Fuel Consumption 4.8 l/h (50Hz 100% Load)	Three Phase 3

FEATURES

-High Performance Diesel Engine ^{**1}

Kubota D1005
Vertical water-cooled, 4-cycle diesel engine
The D1005 diesel engines ensure greater power, more efficient combustion, and cleaner emissions.

-Control Panel ^{**2}

Easy to see and easy operation.

-Automatic Air Bleeding

This system reduces troublesome maintenance procedures by automatically removing air from the fuel line.

-Safety System

Emergency unit detects abnormally low oil pressure or high coolant temperature and stops engine automatically to prevent damage.

-Large Capacity Fuel Tank

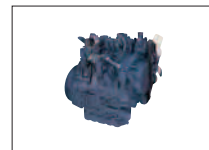
The larger capacity fuel tank enables longer periods of continuous operation.

-One Side Maintenance

Oil, fuel, water, and filters are all located on one side for easy maintenance.

-ATS(AMF)Terminals

ATS terminals are standard equipment.



*1: Kubota D1005



*2: Control Panel

SHT25D (20 - 22kVA)



LINE UP SH20D/SHT25D

FEATURES

- High Performance Diesel Engine ^{**3}

Kubota V2203-B

- Brushless Alternator STAMFORD PI144D

- Control Panel ^{**4}

- Automatic Air Bleeding

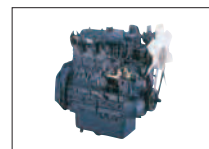
- Safety System

- Large Capacity Fuel Tank

- One Side Maintenance

- ATS(AMF) Terminals

SH20D		SHT25D	
Rated Output 19 kVA (60Hz)	Fuel Consumption 6.6 l/h (100% Load)	Rated Output 20 kVA (50Hz)	Rated Output 22 kVA (60Hz)
		Fuel Consumption 5.4 l/h (50Hz 100% Load)	Three Phase 3



*3: Kubota V2203-B



*4: Control Panel

SPEC. 6P

SH13000 (10 - 11.8kVA)



FEATURES

- More Powerful Gasoline Engine

Robin EH72-2DS 17.2kW Air-Cooled OHV V-TWIN Engine

- Control Panel

Easy to see and easy operation.
Standard features:
V-meter, Hour-meter, Pilot Lamp

LINE UP SH13000/SHT15000

SH13000			SHT15000		
Rated Output 10 kVA (50Hz)	Rated Output 11.8 kVA (60Hz)	Continuous Operating Hours 5.0 h (50Hz 100% Load)	Rated Output 12 kVA (50Hz)	Continuous Operating Hours 5.0 h (50Hz 100% Load)	Three Phase 3



Single Phase



Three Phase

PRODUCTS

EX Series(2.2 - 6.5kVA)

Gasoline Generators

SPEC. 5P

SH3200EX



Rated Output 2.2 kVA (50Hz)	Rated Output 2.5 kVA (60Hz)	Continuous Operating Hours 14 h (50Hz 100% Load)
--	--	--

FEATURES

- Honda OHV 4-stroke Engine

Provides high power, outstanding fuel economy. Fuel consumption is nearly 30% less than comparable side-valve engines.

- Automatic Voltage Regulator(AVR)

ELEMAX's AVR smooths power output fluctuations to enable operation of sensitive electronic equipment.

- Large Fuel Tank

17 liter fuel tank for SH3200EX, SH3900EX and 28 liter fuel tank for upper model realize exceptionally long operating hours.

- 10% to 25% Increased Output Power Compared to DX series **

Rated output power has been increased from 10 to 25% compared to DX series. This power up is provided by newly designed Sawafuji square core alternator.

- New Designed Control Panel **

Not only new attractive outlook design, safety and water resistance are also improved.

- Improved Frame Design

Welded upper bar and widen diameter of the frame pipe are significantly improved the outlook image and protect the machine from rough handling and damage.



*2

SH3200EX



SH7600EXS

SH7600EXS



Rated Output 5.6 kVA (50Hz)	Rated Output 6.5 kVA (60Hz)	Continuous Operating Hours 8.5 h (50Hz 100% Load)
--	--	---

LINE UP SH3200EX/SH3900EX/SH4600EX/
SH5300EX/SH6500EX(S)/SH7600EX(S)

STANDARD Series(1.3 - 4.5kVA)

Gasoline Generators

SPEC. 6P

SH2900

LINE UP

SH1900
SH2900
SH4000
SH5000
SH6000

Rated Output 2.0 kVA (50Hz)	Rated Output 2.3 kVA (60Hz)	Continuous Operating Hours 3.0 h (50Hz 100% Load)
--	--	---

FEATURES

- Honda OHV 4-stroke Engine
- Saddle type Control Box with 2 AC Outlets
- Compact, Light Weight and Solid



WELDER Generator (140A 26V)

Gasoline Generators

SPEC. 6P

SHW190

Generator 2.0 kVA (50Hz)	Welder (DC) 140A/26V	Continuous Operating Hours 6.2 h (AC) (50Hz 100% Load)
---------------------------------------	--------------------------------	--

FEATURES

- Honda OHV 4-stroke Engine
- 190amps Maximum DC Power for Welding
- 17 liter Large Capacity Fuel Tank with Fuel Gauge
- Compact and Light Weight
- Stable-Arc 6-Phase Half Wave Current for Welding



SHX Series(900 - 1500W)

Portable Gasoline Generators

SPEC. 5P

SHX1000



FEATURES

-Advanced Technology^{*3}

Newly designed Multi-pole Alternator and high speed engine dramatically reduced the size and weight.

-Honda 4-stroke Engine

Honda multi purpose engine has been industry standard for reliability and durability in the world. Also guaranteed with just a light pull on the recoil starter.

-Long Operating Hours

Large fuel tank allows efficient work without refueling.

-Portability

These models are especially easy to carry.

-Lower Sound Level(Silent and Power mode)

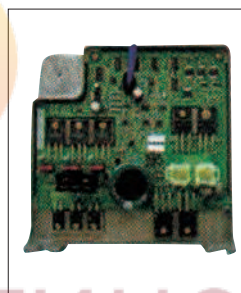
This unique designed silent mode for SHX1000 provides extremely lower sound level with 3/4 load. Just in case to take full load, only to change to Power mode.

-Compact & Light Weight

The SHX1000 weighs only 13.6kg, The SHX2000 weighs only 21kg, less than half of the weight of similar capacity conventional generator.



SHX2000

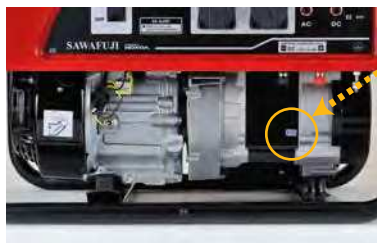


How to Authenticate ELEMEX Generators

Check Point

1 -TRUSTGRAM-

Make sure that the security label of "TRUSTGRAM" is put on the product body.



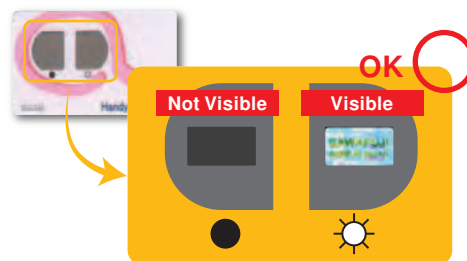
Without TRUSTGRAM...



Check Point

2 -HOLOGRAM-

Make sure that the following change is visible through the "VIEWER"



Window	●	☀
OK	Not Visible	Visible
FAKE	Not Visible	Not Visible
FAKE	Visible	Visible
FAKE	Visible	Not Visible

SPECIFICATIONS

EX Series

Gasoline Generators										3P	FEATURES
Models				SH3200EX	SH3900EX	SH4600EX	SH5300EX	SH6500EX	SH7600EX		
Type				R-type; 220V(50Hz), S-type; 220V(60Hz), D-type; 110/220V(60Hz), LD-type; 127/240V(60Hz)							
Generator	Frequency (Hz)			50, 60							
	Type			Self-Exciting, 2-pole, Field Rotating Type							
	Voltage Regulation System			AVR							
	Phase			Single							
	AC Output (KVA)	Rated Power (KVA)	50Hz	2.2	2.8	3.2	3.8	5.0	5.6		
			60Hz	2.5	3.2	3.8	4.4	5.6	6.5		
		Maximum Power (KVA)	50Hz	2.6	3.3	4.0	4.7	5.8	6.5		
			60Hz	3.2	3.9	4.6	5.3	6.5	7.6		
Rated Voltage (V)		R:220(50Hz), S:220(60Hz), D:110/220(60Hz), LD:127/240(60Hz)									
DC Output (V-A)			12V-8.3A								
Rated Power Factor (cos ø)			1.0								
Engine	Maker			Honda							
	Models			GX160	GX200	GX240	GX270	GX340	GX390		
	Displacement (CC)			163	196	270	270	389	389		
	Net Power (kW)	3,600rpm	3.6	4.1	5.9	6.3	8.0	8.7			
	Ignition System			Transistor			CDI				
	Oil Alert System			YES							
	Starting System			Recoil				Recoil(OP;Electric)			
	Others	L x W x H (mm)			623 x 438 x 491			708 x 548 x 493			
Dry Weight (kg)			44	46	63	68	75	78			
Fuel Tank Capacity (litres)			17			28					
Sound Level (dB) [dB(A)/7m] (0% load)		50Hz	64	65	63	70	71	73			
		60Hz	68	69	71	72	75	76			
Continuous Operating Hours (h)		50Hz	14	10	14	12	10	8.5			
		60Hz	12	8.8	11	10	7.9	7.2			

SHX Series

Portable Gasoline Generators										4P	FEATURES							
Models			SHX 1000						SHX 2000									
Type			R		G		S		L		R		G		S		L	
Generator	Frequency (Hz)		50						60									
	Engine Speed (rpm)		5800/4100(Power Mode/Silent Mode)						4500									
	Waveform		Square-Wave															
	AC Output	Maximum Power (W)	1000						1900		1700		1900					
		Rated Power (W)	900								1500							
		Rated Voltage (V)	220	230	220	120	220	230	220	120								
	DC Output		Only for Charging 12V Automotive Batteries.															
Insulation Class		Maximum Charging Output = 8.3/4.2 A(Power Mode/Silent Mode)						Maximum charging output = 8.3A										
Engine	Maker		Honda															
	Models		GXH50						GX100									
	Type		Air Cooled OHV 4-stroke Gasoline						Air Cooled OHC 4-stroke Gasoline									
	Displacement (CC)		49.4						98.5									
	L x W x H (mm)		465 x 265 x 380						560 x 340 x 415									
Others	Dry Weight (kg)		13.6	14.0	13.6	13.6	21.0	22.0	21.0	21.0								
	Fuel Tank Capacity(litres)		3.8						7.7									
	Sound Level	[dB(A)/7m]	58 (50% load)						63 (50% load)									
		[dB Lwa]	89 (75% load)						93 (75% load)									
	Continuous Operating Hours (h)		5.5 (100% load) 8.6 (50% load)						7 (100% load)									
	Pilot Lamp		LED						LED									
	Power Indicator		LED						LED									
	Oil Alert System		YES						YES									
	Engine Stop		Interlocking with Fuel Cock						Rocker Switch									
	AC	Output	Plug Socket x 1						Plug Socket x 2									
Protective Device								Control Circuit										
DC	Output							Terminal										
	Protective Device							Thermal Type Circuit Breaker										

HEAVY DUTY Type

Diesel Generators										1-2P FEATURES				
Models		SH07D		SH11D		SH15D		SHT15D	SHT17D	SH20D	SHT25D			
Type		R	LD	R	LD	R	D	R	S	LD	R	S		
Generator	Frequency (Hz)		50	60	50	60	50	60	50	60	60	50	60	
	Type		Self-exciting, 2-pole, Field Rotating Type						Self-exciting, 4-pole, brushless, Field Rotating Type					
	Phase		Single			Single		Three		Single	Three			
	Voltage Regulation System		AVR					AVR						
	AC Output	Rated Power (KVA)	5.5	8.0		12		15		-	20			
		60Hz	6.5	10.0		13		16.3		19	22			
	Rated Voltage (V)		220	120/240	220	120/240	220	120/240	Single Phase : 220 Three Phase : 380		120/240	Single Phase : 220 Three Phase : 380		
Rated Power Factor (cos φ)		1.0			1.0		0.8		1.0	0.8				
Engine	Maker		Kubota											
	Models		Z482		D722		D1005		V2203-B					
	Displacement (CC)		479		719		1001		2197					
	Maximum Horse Power (PS)		8.1(3,600rpm)		12.2(3,600rpm)		26(3,600rpm)		32.2(1,800rpm)					
	Starting System		Electric Starter											
Others	L x W x H (mm)		1066 x 618 x 698		1281 x 618 x 698		1474 x 698 x 869		1660 x 690 x 900					
	Dry Weight (Kg)		235		290		387		540					
	Fuel Tank Capacity (liters)		28				53		72					
	Sound Level [dB(A)/7m] (100% load)	50Hz	66.5	-	68.0	-	69.5	-	69.5	-	-	68.0	-	
		60Hz	-	67.5	-	69.0	-	72.8	-	72.8	72.0	-	72.0	
	Continuous Operating Hours (h)	50Hz	12.0	-	8.5	-	10.8	-	11.1	-	-	17.6 *	-	
		60Hz	-	10.0	-	7.0	-	9.0	-	9.5	14.3 *	-	15.2 *	
	Volt Meter		YES											
	Ampere Meter		NO			YES		NO		YES		NO		YES
	Hour Meter		YES											
Warning Lights		Indicator Lihts (4-conditions)												
Output		R: Plug Socket x 2, LD: Plug Socket x 2				Plug Socket x 2				Terminal & Socket		Terminal		
ATS Terminals		YES												

* 75% load

SHX Series

Diesel Generators					1P FEATURES	
Models		SHX8000Di		SHX12000Di		
Type		R	LD	R	LD	
Frequency (Hz)		50	60	50	60	
Generator	Type	Permanent Magnet, Multi-Pole Alternator				
	Phase	Single				
	Voltage Regulation System	Inverter				
	Waveform	Pure Sine wave				
	Output	Maximum power (kVA/kW)	7.5	11.0		
		Rated power (kVA/kW)	7.0	10.2		
	Voltage(V)	220	120/240	220	120/240	
Current (A)	31.8	2 x 29.2-29.2	46.4	2 x 42.5-42.5		
Rated Power Factor (cos ø)	1.0					
Engine	Maker	YANMAR				
	Model	2TNV70-ASG		3TNM68-ASG		
	Displacement (L)	0.570		0.784		
	Rated output (kW/rpm)	9.3/3600		13.8/3600		
	Engine speed(rpm)	2300 - 3400, Variable				
	Starting System	Electric Starter				
	Fuel	Diesel Fuel (B32869A1or equivalent)				
Others	Battery (5HR)	12 - 36 (46B24L)				
	L x W x H (mm)		1080 x 647 x 686	1184 x 670 x 770		
	Dry Weight (kg)		257	278		
	Fuel Tank Capacity		29.0	40.7		
	Sound Level [dB(A)/7m]	25% load	63.5	64.0		
		75% load	65.5	66.0		
		100% load	67.5	68.0		
	Fuel consumption (litres)	25% load	1.1	1.6		
		50% load	1.6	2.3		
		75% load	2.2	3.2		
		100% load	3.0	4.3		
Volt Meter		YES				
Hour Meter		YES (LED Display)				
Warning Lights						
Output		R Type: Plug Socket x 3, LD Type: Plug Socket x 6				
ATS Terminal		YES				

HEAVY DUTY Type

Gasoline Generators

1-2P **FEATURES**

Models				SH11000		SHT11500		SH13000		SHT15000
Type				R	LD	R	S	R	LD	R
Generator	Frequency (Hz)			50	60	50	60	50	60	50
	Type			Self-exciting, 2-pole, Field Rotating Type						
	Voltage Regulation System			AVR						
	Phase			Single		Three		Single		Three
	AC Output (KVA)	Rated Power (KVA)	50Hz	8.5	-	10.0	-	10.0	-	12.0
			60Hz	-	9.5	-	11.5	-	11.8	-
		Maximum Power (KVA)	50Hz	10.0	-	11.5	-	11.0	-	-
			60Hz	-	11.0	-	13.0	-	13.0	13.2
Rated Voltage (V)			220	120/240	220/380	220/380	220	120/240	220/380	
Rated Power Factor (cos ø)			1.0		0.8		1.0		0.8	
Engine	Maker			Honda				Robin		
	Models			GX630				EH72-2DS		
	Displacement (CC)			688				720		
	Net Power (kW)		3,600rpm	15.5				17.2		
	Ignition System			CDI						
	Oil Alert System			YES						
	Starting System			Electric Starter						
Others	L x W x H (mm)			925 x 665 x 636/804 (with wheel)						
	Dry Weight (kg)	without wheel		160				175		
		with wheel		167				183		
	Fuel Tank Capacity(liters)			38						
	Sound Level [dB(A)/7m] (0% load)	50Hz		74				76.0	-	76.0
		60Hz						-	78.0	-
	Continuous Operating Hours (h)	50Hz		7.0	-	7.0	-	5.5	-	5.5
60Hz			-	6.2	-	6.2	-	4.5	-	
Cooling System				Forced Air						
Engine Oil Refill Capacity (liters)				1.8 (with filter replaced) / 1.5 (without filter replaced)				1.55L (inclusive of those in oil filter)		

STANDARD Series

Gasoline Generators

3P **FEATURES**

Models				SH 1900	SH 2900	SH 4000	SH 5000	SH 6000
Type				R-type; 220V(50Hz), S-type; 220V(60Hz), L-type; 120V(60Hz)				
Generator	Frequency (Hz)			50, 60				
	Type			Self-Exciting, 2-pole, Field Rotating Type				
	Voltage Regulation System			AVR				
	Phase			Single				
	AC Output (KVA)	Rated Power (KVA)	50Hz	1.3	2.0	2.7	3.2	4.0
			60Hz	1.5	2.3	3.0	3.6	4.5
		Maximum Power (KVA)	50Hz	1.6	2.4	3.7	4.5	5.5
			60Hz	1.9	2.9	4.1	5.0	6.0
Engine	Rated Voltage (V)			220, 120				
	Rated Power Factor (cos ϕ)			1.0				
	Maker			Honda				
	Models			GX120	GX160	GX240	GX270	GX340
	Displacement (CC)			118	163	270	270	389
	Net Power (kW)		3,600rpm	2.6	3.6	5.9	6.3	8.0
	Ignition System			Transistor		CDI		
Others	Oil Alert System			Transistor		CDI		
	Starting System			Recoil		YES		
	L x W x H (mm)			560 x 422 x 422	605 x 495 x 490	655 x 511 x 490	655 x 511 x 490	655 x 511 x 490
	Dry Weight (kg)	50Hz		29	34	51	54	65
		60Hz		69	70	72	72	73
	Sound Level [dB(A)/7m] (0% load)	50Hz		71	72	74	75	76
		60Hz		3.1	3.0	3.6	3.0	2.8
	Continuous Operating Hours (h)			2.1	2.5	3.1	2.7	2.3

WELDER Generator

Gasoline Welder Generator

3-4P **FEATURES**

Models				SHW190			
Type				R	S	L	
Generator	Frequency (Hz)			50	60	60	
	Type			2-pole, Field Rotating Type			
	Phase			Single			
	AC Output (KVA)	Rated Power (KVA)	50Hz	2.0	-	-	
			60Hz	-	3.0	4.0	
	Rated Voltage (V)			220			
	Rated Power Factor (cos ϕ)			1.0			
Welder	Type			2-pole, Field Rotating Type			
	Rectifier Type			Six Phase Half Wave Rectifier			
	Rated Output		3,700rpm	140A 26V			
	Current Control Range (A)			50 - 190			
	Rated Duty Cycle (%)			50			
	Welding Rod			2.6 to 5.0 mm dia.			
	Maker			Honda			
Engine	Models			GX390			
	Displacement (CC)			389			
	Net Power (kW)		3,600rpm	8.7			
	Ignition System			CDI			
	Oil Alert System			YES			
	Starting System			Recoil (OP;Electric)			
	L x W x H (mm)			679 x 511 x 490			
Others	Dry Weight (kg)			90			
	Fuel Tank Capacity (liters)			17			
	Sound Level [dB(A)/7m] (0% load)	50Hz		75			
		60Hz		75			
	Continuous Operating Hours (h) (AC 100%)	50Hz		6.2			
		60Hz		5.2			

*1 : Only R,S type

*2 : only Electric starter type

Standard Accessory

Portable Gasoline Generators				Gasoline Generators						WELDER
SHX Series				EX Series						SHW190
Owner's Manual	SHX1000	SHX2000	SH3200EX	SH3900EX	SH4600EX	SH5300EX	SH6500EX	SH7600EX		
Plug	○	○	○	○	○	○	○	○	○	○
Spark plug	○	○	○	○	○	○	○	○	○	○
Wrench	○	○	○	○	○	○	○	○	○	○
Tool kit	○	○	○	○	○	○	○	○	○	○
Slow Blow Fuse	○	○	○	○	○	○	○	○	○	○
Battery	○	○	○	○	○	○	○	○	○	○
Band hook for battery	○	○	○	○	○	○	○	○	○	○
Optional Equipment	SHX1000	SHX2000	SH3200EX	SH3900EX	SH4600EX	SH5300EX	SH6500EX	SH7600EX	SHW190	
Electric Starter	○	○	○	○	○	○	○	○	○	○
4-wheel kit	○	○	○	○	○	○	○	○	○	○

Standard Accessory

STANDARD Series				HEAVY DUTY Type					
Owner's Manual	SH1900	SH2900	SH4000	SH5000	SH6000	SH11000	SHT11500	SH13000	SHT15000
Plug	○	○	○	○	○	○	○	○	○
Spark plug	○	○	○	○	○	○	○	○	○
Wrench	○	○	○	○	○	○	○	○	○
Tool kit	○	○	○	○	○	○	○	○	○
Slow Blow Fuse	○	○	○	○	○	○	○	○	○
Battery	○	○	○	○	○	○	○	○	○
Band hook for battery	○	○	○	○	○	○	○	○	○
Optional Equipment	SH1900	SH2900	SH4000	SH5000	SH6000	SH11000	SHT11500	SH13000	SHT15000
Electric Starter	○	○	○	○	○	○	○	○	○
4-wheel kit	○	○	○	○	○	○	○	○	○

Standard Accessory

DIESEL Generators				HEAVY DUTY Type					
Owner's Manual	SH07D	SH11D	SHX8000Di	SHX12000Di	SH15D	SHT15D	SHT17D	SH20D	SHT25D
Plug	○	○	○	○	○	○	○	○	○
Spark plug	○	○	○	○	○	○	○	○	○
Wrench	○	○	○	○	○	○	○	○	○
Tool kit	○	○	○	○	○	○	○	○	○
Slow Blow Fuse	○	○	○	○	○	○	○	○	○
Battery	○	○	○	○	○	○	○	○	○
Band hook for battery	○	○	○	○	○	○	○	○	○
Optional Equipment	STD	STD	STD	STD	STD	STD	STD	STD	STD
Electric Starter	○	○	○	○	○	○	○	○	○
4-wheel kit	○	○	○	○	○	○	○	○	○

Specifications are subject to change without notice.